



**goldenomega**

EXPERIENCE THE DIFFERENCE

# PRODUCT PROFILE

Golden Omega's manufacturing facility is strategically located in the middle of the richest fishing ground for anchovy in the world, and it is also vertically integrated from fisheries which guarantees control and full traceability. The crude oil is sourced from selected Friend of the Sea and IFFO RS certified fishing companies in Chile and Peru, including its shareholders. All the crude oil used as raw material in Golden Omega's production has been verified as "pure anchovy from the South Pacific Ocean".

Furthermore the levels of contaminants are far below the established European regulatory guidelines.

• **Pharmaceutical Standards:** The production facility is built to FDA pharmaceutical standards. Golden Omega uses a Pharmaceutical Quality System (ICHQ 10) that includes GMP for Active Pharma Ingredients (ICHQ 7), the guidelines for Development of Pharmaceutical Products (ICHQ 9) and Quality Risk Management (ICHQ 8).



Golden Omega Fish Oils are high quality Omega3 concentrates up to 700mg/g EPA + DHA combined, obtained from sustainable sources in South America.

## GOLDEN OMEGA ADVANTAGES

- **Location:** The production facility is located in the northern Chile just besides the fisheries in the middle of the richest fishing ground for anchovies worldwide.
- **Vertical Integration:** Golden Omega is vertically integrated from fisheries which guarantees control over the supply chain and full traceability from the fishing to the final Omega-3 product. The crude oil is provided by Corpesca and Orizon (shareholders).
- **Guaranteed Supply:** Extensive knowledge and expertise in the fishing industry guarantees a sustainable supply of fresh, high quality fish oil. The raw material is supplied from 10 company-owned fish oil and fish meal processing facilities.
- **High Quality products:** Due to short transportation routes and the freshness of the starting material, Golden Omega has a very good sensory profile. The new manufacturing plant uses the latest technology and can guarantee good organoleptic properties, with very low peroxide and anisidine values (TOTOX is typically 3 - 5).

GOLDEN OMEGA® ADVANTAGES	
<b>Vertical integration / Location</b>	
✓	100% Vertically integrated to fish oil
✓	Factory located in the middle of the richest fishing ground for anchovy in the World
✓	Obtained 100% from Anchovy
✓	Fresh raw material, full traceability, sustainable certifications
✓	Reduced ecological footprint
<b>State of the art facility / Process</b>	
✓	Factory built under pharmaceutical standards
✓	Unique purification process for the oil
✓	Full deodorization
✓	Extremely low in contaminants and oxidation parameters. Great sensory profile
✓	Unique Patented Technology (Selective Crystallization) allows up to 700mg/g EPA+DHA concentrates



# PRODUCT PROFILE

- **Purity you can see.** The EE concentrates are Gardner colour 2 or below, and the TG concentrates are Gardner colour 3 or below. This is due to a novel R&D development which allows Golden Omega to remove in a much deeper way some unwanted compounds in the oil.



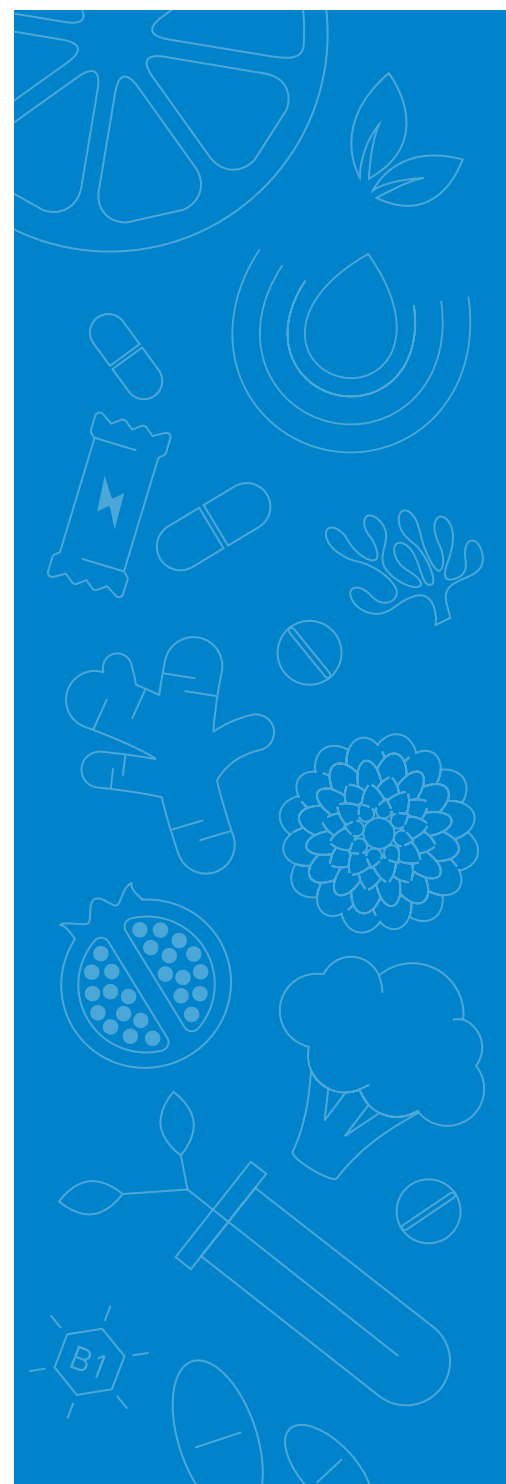
- **Reduced Ecological Footprint:** Assured supply of fresh, high quality fish oil. The production unit is close to the fisheries therefore no need for transportation of the crude oil. Golden Omega assembles their own drums at the facility which again save 90 % transportation of drums.

- **From sustainable sources.** Golden Omega is produced mainly from sustainable wild anchovies which produce higher purity fish oils than larger species of fish, with minimal impact on biodiversity. Golden Omega is Friends of The Sea certified. Friends of the Sea is an international project for the certification and promotion of seafood from sustainable fisheries and sustainable aquaculture. All

the Golden Omega fish oil plants are certified by IFFO for responsible fishing.

- **Latest generation of processing equipment.**

## CERTIFICATIONS





**goldenomega**

EXPERIENCE THE DIFFERENCE

# PRODUCT PROFILE

## EE CONCENTRATES EPA + DHA 500 TO 600 mg/g

### HIGH EPA

PRODUCT	EPA mg/g	DHA mg/g	TOTAL 0-3 mg/g
EE400100	400	100	570
EE400200	400	200	700
EE50070	500	70	600

## EE CONCENTRATES EPA + DHA 600 TO 750 mg/g

### HIGH EPA

PRODUCT	EPA mg/g	DHA mg/g	TOTAL 0-3 mg/g
EE460180	460	180	680
EE500200	500	200	800
EE420280	420	280	770

### BALANCED

PRODUCT	EPA mg/g	DHA mg/g	TOTAL 0-3 mg/g
EE330230	330	230	665
EE310240	310	240	620

### BALANCED

PRODUCT	EPA mg/g	DHA mg/g	TOTAL 0-3 mg/g
EE360240	360	240	680
EE400300	400	300	800

### HIGH DHA

PRODUCT	EPA mg/g	DHA mg/g	TOTAL 0-3 mg/g
EE100400	100	400	560
EE100460	100	460	630
EE100500	100	500	650

### HIGH DHA

PRODUCT	EPA mg/g	DHA mg/g	TOTAL 0-3 mg/g
EE185455	185	455	700
EE065560	65	560	680
EE150500	150	500	700



**goldenomega**

EXPERIENCE THE DIFFERENCE

# PRODUCT PROFILE

## TG CONCENTRATES EPA + DHA 500 TO 600 mg/g

### HIGH EPA

PRODUCT	EPA mg/g	DHA mg/g	TOTAL 0-3 mg/g
TG400100	400	100	570
TG440120	440	120	580
TG400200	400	200	700
TG500100	500	100	650

### BALANCED

PRODUCT	EPA mg/g	DHA mg/g	TOTAL 0-3 mg/g
TG300200	300	200	600
TG330230	330	230	665
TG310280	310	280	680

### HIGH DHA

PRODUCT	EPA mg/g	DHA mg/g	TOTAL 0-3 mg/g
TG100460	100	460	630

## TG CONCENTRATES EPA + DHA 600 TO 750 mg/g

### HIGH EPA

PRODUCT	EPA mg/g	DHA mg/g	TOTAL 0-3 mg/g
TG470190	470	190	750

### BALANCED

PRODUCT	EPA mg/g	DHA mg/g	TOTAL 0-3 mg/g
TG360240	360	240	680
TG400300	400	300	800

### HIGH DHA

PRODUCT	EPA mg/g	DHA mg/g	TOTAL 0-3 mg/g
TG100500	100	500	670
TG115500	115	500	670
TG060600	60	600	750

PRODUCT	EPA mg/g	DHA mg/g	TOTAL 0-3 mg/g
90/60	90	60	180
120/90	120	90	234
30/150	30	150	201

about

goldenomega

Golden Omega is a young Chilean company focused on producing high quality Omega 3 concentrates.



Thanks to a unique IP protected process, we can offer Golden Omega fish oil in powder form for direct compression, with the following advantages:

- ✓ Bioavailability
- ✓ Faster Absorption
- ✓ No Reflux
- ✓ Stability (3 years in tablets)
- ✓ Gelatin-free
- ✓ Odorless and tasteless
- ✓ Easy combination with other ingredients

\* All standard TG concentrates have a TG content > 60%. \*\* Premium TG content > 90% are also available upon request.

Geelawson is a division of LEHVOSS (UK) Ltd. Any information or recommendations made for use of Seller's materials do not affect in any way Buyer's obligation to examine and/or test the Seller's goods with regard to their suitability for Buyer's purposes especially with regard to consumer use. No information given by the Seller is to be construed in any way as a guarantee regarding characteristics or duration of use, unless such information has been explicitly given as a guarantee.