

High-performance chemical and mineral specialties. Since 1894.



KEMOLIT and FILLEX

Wollastonit for Paints &
Coatings and Adhesives
and Sealants

Properties and applications

Technical properties

- Reinforcing effect because needle-shaped
- Reinforcing and volume-stable in joints
- Provides structure, better adhesion and resistance
- Anti-corrosive properties in general
- pH-buffer longer storage stability
- Excellent film stability



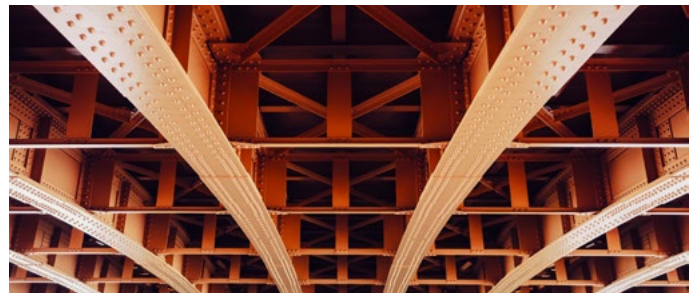
Powder coatings and resistance



Coating systems, waterborne and conventional



Adhesives and sealants



Corrosion protection systems



Silicate panels ceiling constructions



Building chemistry, plasters & thick-film systems



Talk to our experts.

Scan the code for contact details.

www.lehvoss-surfacetec.de

Wolkem India Ltd.:

Highly functional wollastonite grades for Paints
& Coatings and Adhesives and Sealants.

WOLLASTONITE of the KEMOLIT series is an acicular, naturally occurring calcium metasilicate, its chemical composition is CaSiO_3 . Kemolite occurs in acicular, finely ground to micronised form depending on the aspect ratio. Wollastonite of the Fillex series are surface-treated and can be produced individually.

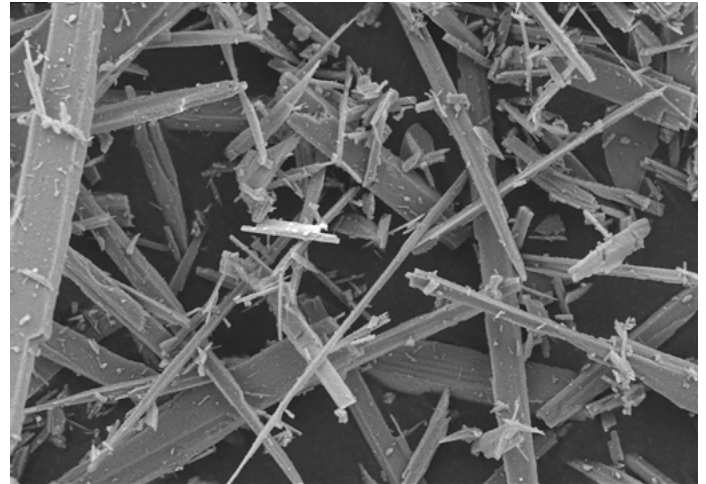


**OBERFLÄCHEN-
TECHNIK**

WOLKEM Wollastonit series

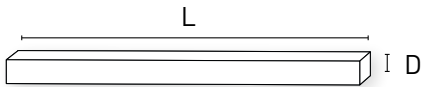
KEMOLIT has a rod length of 10µm to max. 1,200 µm, in aspect ratio there are types with a low ratio of 3:1 as well as high ones with a ratio up to 10:1. The pH value of KEMOLIT is approx. 9, wollastonite is temperature resistant up to 1,540 °C, Moh's hardness is 4.5, chemically inert, low moisture. For individual end-uses, products with different LOI values can be offered on request.

FILLEX are surface-treated wollastonite grades especially for the plastics and adhesives industry. Depending on the industrial binder system, different silanes improve the mechanical properties of the moulded part with regard to embedding in the respective matrix. The needle-shaped wollastonite reduces warpage and increases heat distortion temperature even in high-temperature applications.

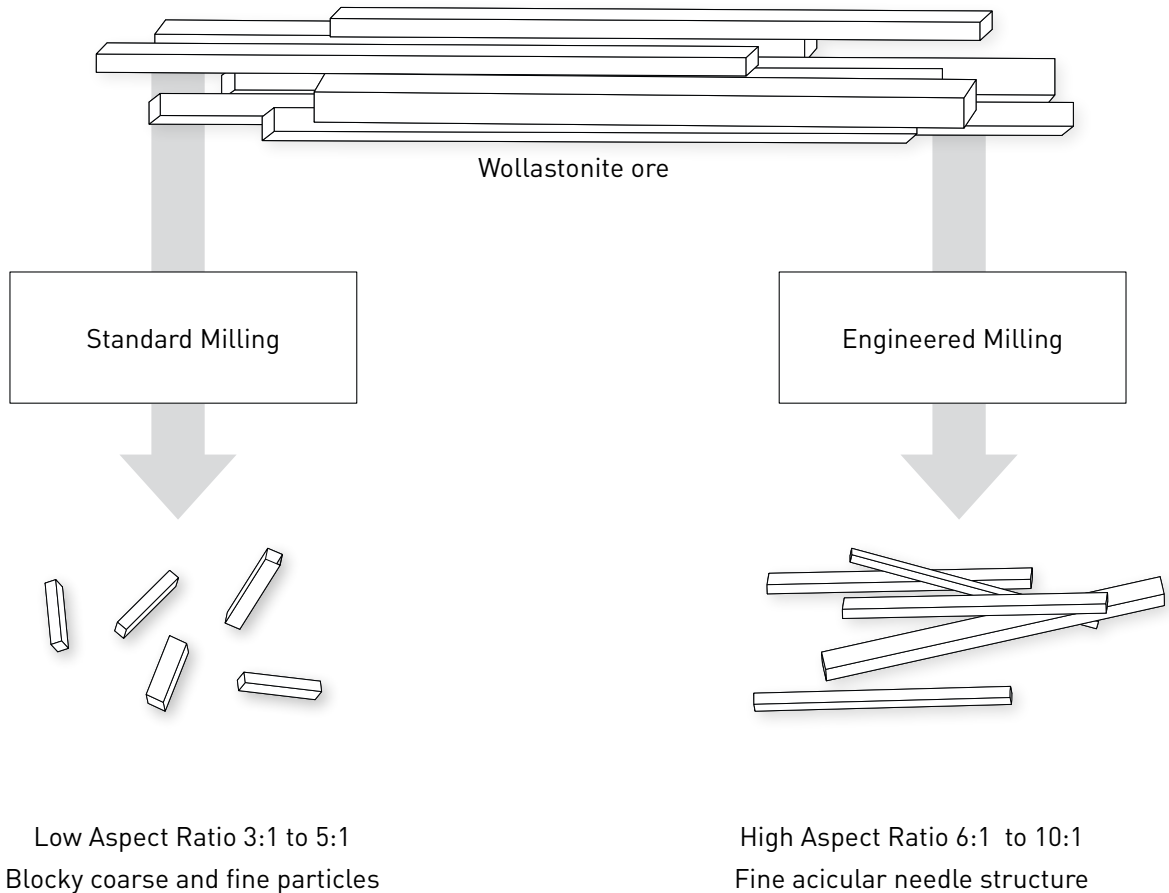


Dosage Depending on the application
Packaging bags of 25 kg netto /BigBag
750 kg / 900 kg / 1,000 kg

What does the aspect ratio describe



$$\text{Aspect Ratio} = L / D$$



Produkt data

The product is not a dangerous substance or mixture of dangerous substances according to Regulation (EC) No 1272/2008 and does not require labelling.

Product	Rod Length max.	Markets & Application good experience	Technical Performance	Aspect Ratio [L / Ø]	brightness [comp. 100% MgO]
KEMOLIT KWB-1010	10 µm	Lacquers in general, powder lacquers, adhesives	Corrosion inhibitor through alkaline potential, adhesion, reinforcement	3:1	84
FILLEX -9AE1(KWB)*	10 µm	Lacquers in general, powder lacquers, adhesives	*Surface treated corrosion protection, weather resistant	3:1	82
KEMOLIT KWB-1020	20 µm	Lacquers in general, powder lacquers, adhesives	Corrosion protection, structural donor, adhesion, reinforcement	3:1	82
KEMOLIT KW-1025	30 µm	Lacquers in general, powder lacquers, adhesives	Corrosion protection, structural donor, adhesion, reinforcement	7:1	80
FILLEX 7AE1 (KW)*	30 µm	Lacquers in general, powder lacquers, adhesives	*Surface treated corrosion protection, weather resistant	7:1	80±2
KEMOLIT KW-4	55 µm	Construction chemical applications in general	Reinforcement, against shrinkage and warpage, stable in joint compounds	4:1	78
KEMOLIT KW-3	70 µm	Construction chemical applications, adhesives and sealants	Reinforcement, stable in joint compounds, high brightness	4:1	78
KEMOLIT H-3	70 µm	Construction chemical applications, adhesives and sealants	against shrinkage and warpage, volume-stable, economical	4:1	66
KEMOLIT KWB-200	80 µm	Construction chemical applications in general, adhesives and sealants	Reinforcement, corrosion protection, high brightness	3:1	81
KEMOLIT KW-1	125 µm	Construction chemical applications in general, adhesives and sealants	against shrinkage and warpage, volume stable, good brightness	5:1	76
KEMOLIT H-60	200 µm	Construction chemical applications, mortars, concrete and stucco compounds	Reinforcement, stable in joint compounds, economical	6:1	Off white
KEMOLIT KSV-60N	250 µm	Construction chemical applications in general, adhesives and sealants	Reinforcement, corrosion protection, high brightness	9:1	72
KEMOLIT KW-60	250 µm	Paints in general, powder coatings, adhesives	Corrosion and weather resistant, structural donor	6:1	70±2
FILLEX 2AH3(KW)*	250 µm	Construction chemicals, adhesives, paints	*Surface treated, Dimensional stability, better bonding	8:1	70±2
KEMOLIT KW-HW	250 µm	Adhesives and sealants	Volume-stable, weather-resistant	10:1	68
FILLEX 1AF1(KW)*	250 µm	Colours in general	*Surface treated, corrosion and weather resistant	10:1	-
KEMOLIT KM-60	500 µm	Industry, powder coatings, construction in general	Dimensional stability, structure provider, reinforcement	7 : 1	-
KEMOLIT D-1	1,000 µm	Construction in general, cementitious materials, mortar	Reinforcement, against shrinkage and warpage, stable in joint compounds	5 : 1	-

* Fillex products are surface-treated.

Further information on the application, properties and processing of this product is available on request. All data correspond to technical product information.

Lehmann&Voss&Co. KG
Alsterufer 19
20354 Hamburg
Germany
Tel +49 40 44197-349
Email: surface@lehvoss.de
www.lehvoss-surfacetec.com



www.lehvoss.com

Any recommendations made for use of the Seller's materials are made to the best of the Seller's knowledge and are based upon prior tests and experience of the Seller believed reliable; however, the Seller does not guarantee the results to be obtained and all such recommendations are non-binding, including with regard to the protection of third-party rights, do not constitute a commitment and do not affect in any way the Buyer's obligation to examine and/or test the Seller's goods with regard to their suitability for the Buyer's purpose. No information given by the Seller is to be construed in any way as a guarantee regarding characteristics or duration of use, unless such information has been explicitly given as a guarantee.

